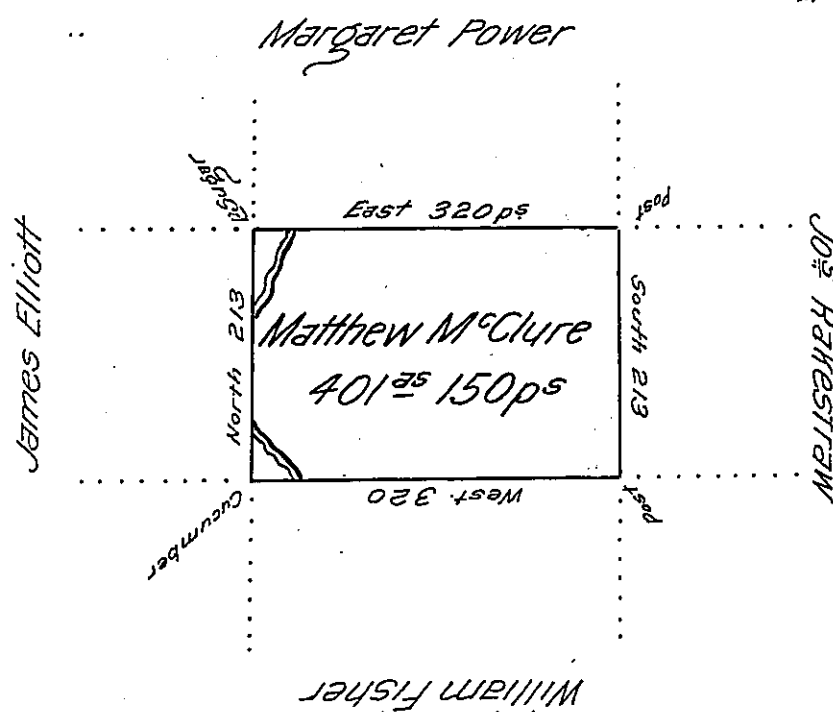


FORM No. 1.



Situate on the west side of French Creek in Allegheny County containing 401 Acres 150 perches and allowance of Six pr Cent for Roads &c Surveyed the 4th day of March 1800 for Matthew McClure Inpursuance of his Improvement and actual Settlement dated the 21st day of January 1799

John Power D^r Sr.

To Daniel Brodhead Esquire
Surveyor General

IN TESTIMONY that the above is a copy of the original remaining on file in the Department of Internal Affairs of Pennsylvania, made conformably to an Act of Assembly approved the 16th day of February, 1833, I have hereunto set my Hand and caused the Seal of said Department to be affixed at Harrisburg, this thirtieth day of June 1906.

George D. Brown
Secretary of Internal Affairs.